



Alexis[®] O

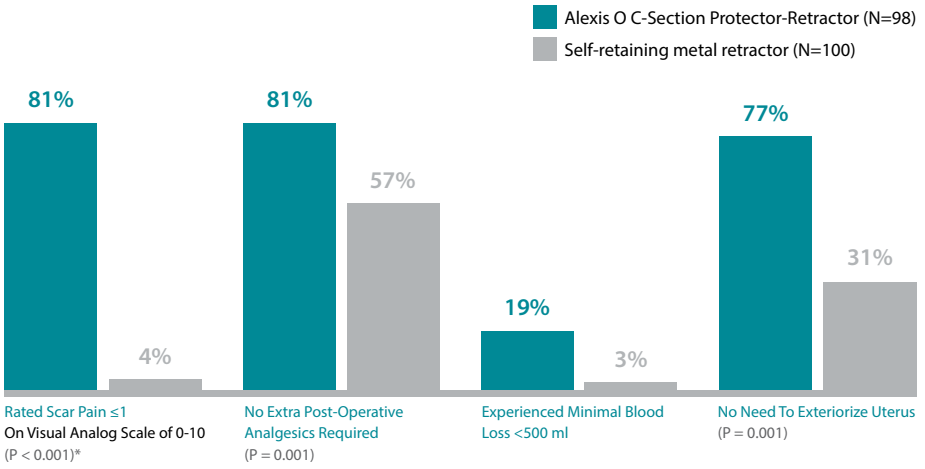
C-Section Protector-Retractor



Alexis O

C-Section Protector-Retractor

Clinical evidence shows increased patient comfort and improved outcomes when using the Alexis O C-Section Protector-Retractor.¹



1% Surgical Site Infection VS. **8% Surgical Site Infection****

* Significant p-values were calculated for the two populations using a 2-sample t-test.

** 6-8 weeks postoperative surveillance (P = 0.035).

Clinical Benefits[†]

Maximises incision exposure with a minimum incision size

Frees up valuable hands in the operating theater

Reduces scar pain, blood loss and the need for post-op analgesics¹

Reduces surgical site infection in low-risk caesarean procedures¹

Enhances visualisation of the operative field¹

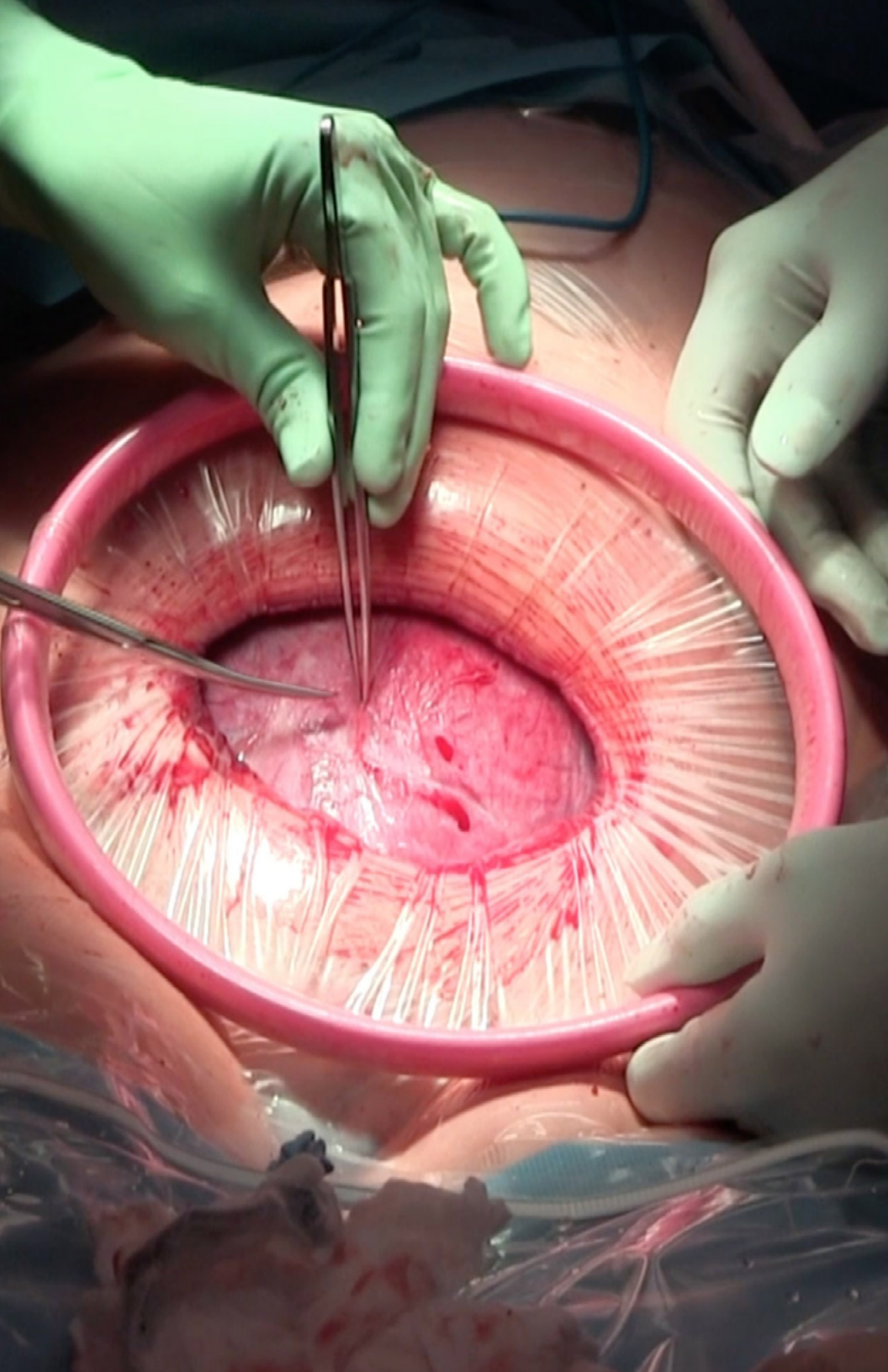
Allows the uterus to be sutured *in situ*,¹ which may reduce intraoperative nausea²

Improves patient satisfaction with wound healing¹

Reduces the need for a bladder blade

Retracts the panniculus away from the operative site

[†]Alexis O C-section protector-retractor vs. Self-retaining metal retractors





“Since I began using the Alexis O C-Section retractor in my cesarean sections, I have seen a drastic improvement in the new mom’s ability to begin breastfeeding her newborn.

The Alexis O C-Section retractor has also decreased the need for strong, painful pressure to be exerted on the uterine fundus to deliver the baby. My cesarean section patients usually go home on post-op day 2 and the use of opiate medications by my patients has significantly decreased.”

– Jamie Lipeles, MD

“To be conservative the Alexis O C-Section protector-retractor saves me anywhere from 5-10 minutes for each C-section. When you count in the other benefits so it’s not just the time factor but the overall picture looking at the improved visualization, postoperative benefits to the patient, and the possibility that the assist might leave the surgery to attend to another delivery, the benefits far outweigh not using it during a C-section.”

- Shahryar Masouem, MD

“In the middle of the night when I might not have the best surgical assistant available the Alexis retractor has helped immensely. I can really just do a C-section with myself and a scrub tech.”

- Erin Stoehr, DO



Alexis O C-Section Protector-Retractor

Rigid retraction ring for maximum uterine exposure

Reorder No.	Size	Sheath Length	Incision Range	Qty/Box
G6313	Large	25cm	9-14cm	5
G6314	X-Large	34cm	11-17cm	5

1. Hinkson L, Siedentopf J-P, Weichert A, Henrich W. Surgical site infection in cesarean sections with the use of a plastic sheath wound retractor compared to the traditional self-retaining metal retractor. *Eur J Obstet Gynecol Reprod Biol.* 2016;203:232-238. (Level of Evidence 1)

2. Siddiqui M, Goldszmidt E, Fallah S, Kingdom J, Windrim R, Carvalho JC. Complications of exteriorized compared with in situ uterine repair at cesarean delivery under spinal anesthesia: A randomized controlled trial. *Obstet Gynecol.* 2007;110(3):570-575. (Level of Evidence 1)

Visit [appliedmedical.com/alexisocsection](https://www.appliedmedical.com/alexisocsection) for more information.

The Alexis O C-section protector-retractor provides atraumatic, circumferential retraction and protection during a non-urgent cesarean section.

Please contact your Applied Medical representative for more information on availability. This information is intended for dissemination exclusively to healthcare professionals and is not intended to replace labeling and Instructions for Use (IFU). Please refer to the IFU for the indications, contraindications, warnings, precautions, instructions and other information.

© 2022 Applied Medical Resources Corporation, Rancho Santa Margarita, CA. All rights reserved. Applied Medical, the Applied Medical logo design, and marks designated with the symbol ® are trademarks of Applied Medical Resources Corporation, registered in one or more of the following countries: Australia, Canada, Japan, South Korea, the United States, the United Kingdom, and/or the European Union.

03/2022 432365-EN-EUR-A

